



2022 Homelessness Summary Brief

NY-508

Erie | Niagara | Genesee | Orleans | Wyoming Counties



2022 Homelessness Summary Brief

NY-508: Erie, Niagara, Genesee, Orleans, Wyoming

Homelessness is one of the most difficult experiences a person can endure. The purpose of this summary brief is to provide the total estimate of homelessness for the five counties within the NY-508 Continuum of Care and a breakdown of the number of people experiencing homelessness.

Our community's homelessness alleviation providers served 8,235 people who experienced the traumatic instability that results from losing housing. Compared to last year, homelessness in Erie, Niagara, Genesee, Orleans, and Wyoming counties increased by 60%. One known contributor to the increase in the number of people experiencing homelessness this year is the inclusion of data from a large service provider who served over 1,200 individuals. Another known contributor is the expiration of the NYS eviction moratorium and additional funding from the CARES Act.

The Homeless Alliance of WNY is the Continuum of Care (CoC) Lead Agency for Erie, Niagara, Genesee, Orleans, and Wyoming Counties. The CoC refers to the unified geography covered by the HUD HEARTH Act that makes agencies like the Homeless Alliance responsible for coordinating and overseeing the CoC application for HUD and facilitating strategic dialogue between grantees of this grant and other funding sources to ensure a unified, effective, and efficient effort to end homelessness in the region. The Homeless Alliance also operates the local Homeless Management Information System (HMIS), which collects information on all HUD-funded and voluntarily participating non-HUD-funded homelessness alleviation providers, including outreach, emergency shelters, permanent supportive housing, rapid re-housing, and transitional housing providers. The data in this report, unless otherwise stated, comes from the HMIS, which uses self-reported client-level information that is recorded on intake by these homelessness alleviation providers. All data in this report is aligned with federal fiscal years. FY2022 is October 1, 2021 – September 30, 2022.



2022 Homelessness Summary Brief

NY-508: Erie, Niagara, Genesee, Orleans, Wyoming

Key Findings

Annual Counts of People Experiencing Homelessness

Region	FY2021 Totals		FY2022 Totals		% Change
	HMIS	Estimated Count	HMIS	Estimated Count	
NY-508	4072	5140	7364	8235	60.2%
Erie County	3244	3700	5906	6405	73.1%
Niagara County	763	1050	1030	1369	30.4%
Genesee County	161	185	206	218	17.8%
Orleans County	100	115	315	348	202.6%
Wyoming County	65	85	66	66	-22.4%

Table 1: Count and percent change of people experiencing homelessness in NY-508 by County and Year. Percent change calculated using the estimated count.

The estimated total is determined using repeat rates based on the number of duplicated clients served at HMIS-participating providers to account for clients who could have been counted in both participating and non-participating programs. HMIS is only required for providers whose funding dictates its use; other service providers may opt in. Those who do not have an entire year’s worth of data in HMIS provide the Homeless Alliance of WNY with annual counts of the number of clients they served. In order to account for clients who may have been served by both participating and non-participating HMIS providers, we adjust their provided total based on the duplication rates for that project type and County in HMIS.

The data source for the remainder of this report is from NY-508’s Homeless Management Information System (HMIS).

Demographics of Homelessness

Household Type and Homelessness

Household Type	Erie County Households		Niagara County Households		GOW Counties Households	
	#	%	#	%	#	%
Adults Only	2900	79.7%	696	89.1%	407	90.2%
Families	578	15.9%	72	9.2%	43	9.5%
Children Only	160	4.4%	13	1.7%	1	0.2%

Table 2: Household type distribution among the households experiencing homelessness in NY-508 by County (1 single adult = 1 household). Excludes households with any unknown age client.

Gender and Homelessness

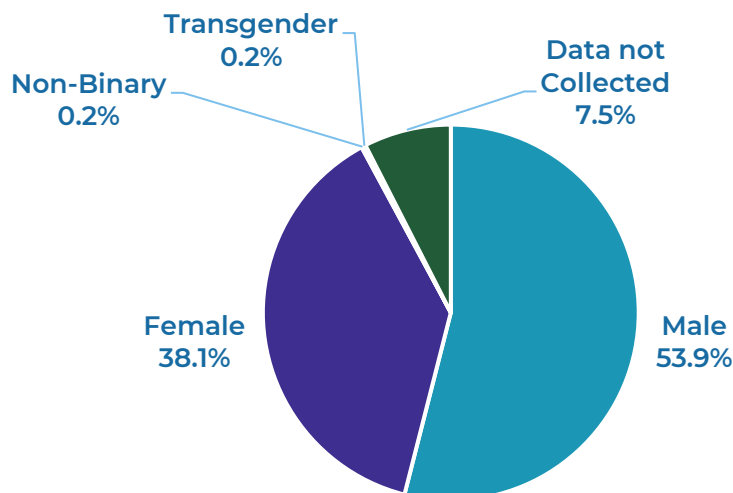


Figure 1: Proportion of people experiencing homelessness in NY-508 by Gender.

Gender	Erie County Clients		Niagara County Clients		GOW Counties Clients	
	#	%	#	%	#	%
Male	3051	51.8%	676	65.6%	350	60.2%
Female	2291	38.9%	322	31.3%	222	38.2%
Non-Binary	16	0.3%	4	0.4%	0	0%
Transgender	13	0.2%	3	0.3%	0	0%
Data not Collected	519	8.8%	25	2.4%	9	1.5%

Table 3: Gender distribution of people experiencing homelessness in NY-508 by County.

Race and Homelessness

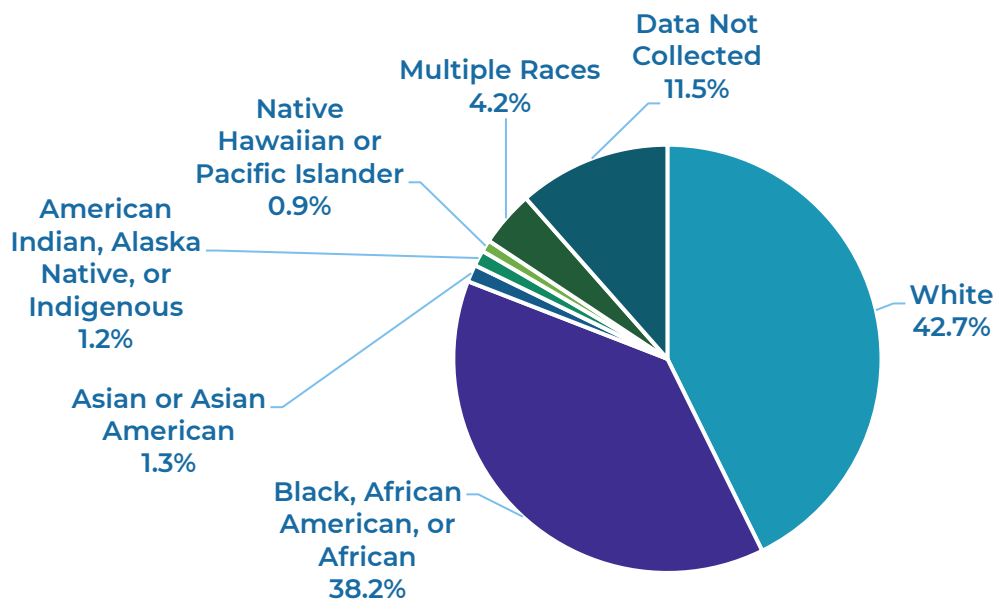


Figure 2: Proportion of people experiencing homelessness in NY-508 by self-reported Race.

Race	Erie County Clients	Niagara County Clients	GOW Counties Clients
White	2346	447	406
Black, African American, or African	2395	394	105
Asian or Asian American	95	3	1
American Indian, Alaska Native, or Indigenous	64	23	5
Native Hawaiian or Pacific Islander	66	2	1
Multiple Races	189	103	23
Data Not Collected	751	58	40

Table 4: Self-reported Race of people experiencing homelessness in NY-508 by County.

Ethnicity and Homelessness

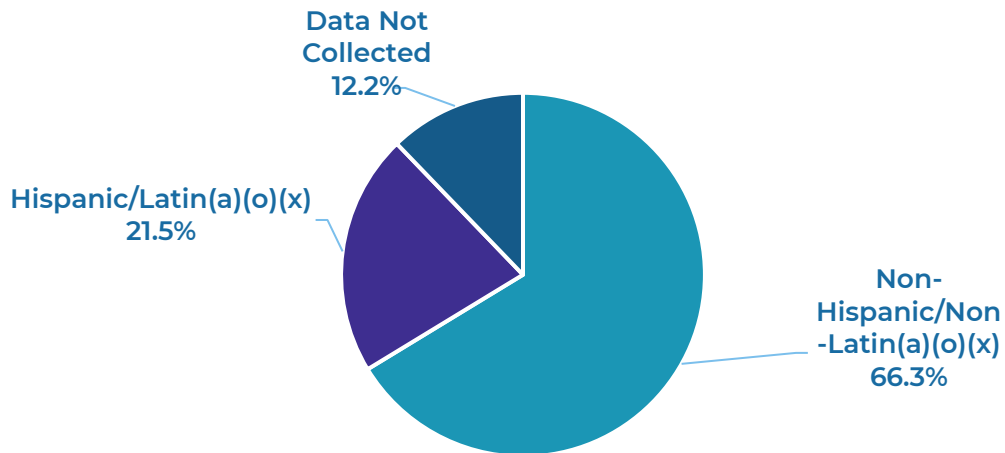


Figure 3: Proportion of people experiencing homelessness in NY-508 by self-reported Ethnicity.

Ethnicity	Erie County Clients	Niagara County Clients	GOW Counties Clients
Non-Hispanic/Non-Latin(a)(o)(x)	3675	847	493
Hispanic/Latin(a)(o)(x)	1484	81	32
Data Not Collected	747	102	56

Table 5: Self-reported Ethnicity of people experiencing homelessness in NY-508 by County.

Age and Homelessness

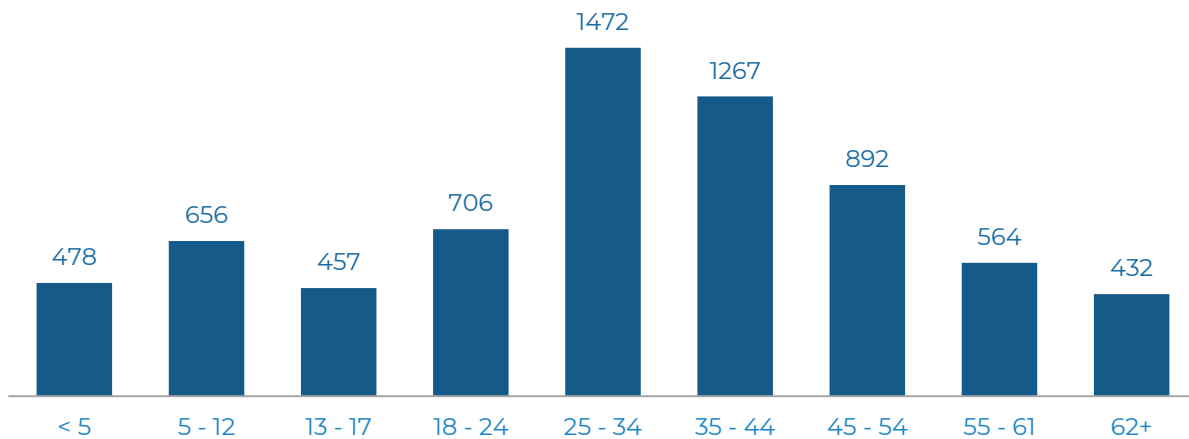


Figure 4: Age of people experiencing homelessness in NY-508. Counts exclude those who did not provide a date of birth.



2022 Homelessness Summary Brief

NY-508: Erie, Niagara, Genesee, Orleans, Wyoming

Age	Erie County Clients	Niagara County Clients	GOW Counties Clients
<5	378	56	47
5-12	543	87	32
13-17	374	71	14
All Youth (under 18)	1295	214	93
18-24	569	64	79
25-34	1164	211	128
35-44	990	187	117
45-54	682	164	74
55-61	440	107	42
62+	343	75	39
All Adults (18 and Older)	4188	808	479
Data Not Collected	423	8	9

Table 6: Total Youth and Adults experiencing homelessness in NY-508 by County.

Disability and Homelessness

Experiencing a Disability	Erie County Clients	Niagara County Clients	GOW Counties Clients
Yes	2228	448	237
No	2831	479	209
Unknown	847	103	135

Table 7: Distribution of clients experiencing a disability in NY-508 by County.



2022 Homelessness Summary Brief

NY-508: Erie, Niagara, Genesee, Orleans, Wyoming

Disability Type	Erie County Clients		Niagara County Clients		GOW Counties Clients	
	#	%	#	%	#	%
Mental Health Disorder	1479	25.0%	272	26.4%	102	17.6%
Alcohol Use Disorder	171	2.9%	20	1.9%	12	2.1%
Drug Use Disorder	319	5.4%	52	5.0%	11	1.9%
Both Alcohol and Drug Use Disorders	441	7.5%	50	4.9%	9	1.5%
Chronic Health Condition	602	10.2%	109	10.6%	16	2.8%
HIV/AIDS	42	0.7%	2	0.2%	1	0.2%
Development Disability	260	4.4%	55	5.3%	8	1.4%
Physical Disability	793	13.4%	132	12.8%	63	10.8%

Table 8: Distribution of disability type experienced by clients in NY-508 by County. Clients who did not report experiencing a disability and those whose disability is unknown are excluded from the numerators but not the denominator.

Number of Disabilities Experienced	Erie County Clients	Niagara County Clients	GOW Counties Clients
1	741	183	99
2	560	106	37
3+	738	96	18

Table 9: Distribution of number of disabilities experienced by clients in NY-508 by County. Excludes clients who did not report experiencing a disability and those whose number of disabilities experienced is unknown.



2022 Homelessness Summary Brief

NY-508: Erie, Niagara, Genesee, Orleans, Wyoming

Before and After Homelessness

The situations that lead to homelessness, where people resided prior to entering a program, and where they go to after exiting.

Primary Reason for Homelessness

Primary Reason for Homelessness	Erie County Households		Niagara County Households		GOW County Households	
	#	%	#	%	#	%
Relocation from out of the NY-508 CoC area	815	29.5%	43	8.3%	1	0.8%
Household Disputes (not DV)	293	10.6%	56	10.7%	25	19.5%
Release from Institution	146	5.3%	99	19.0%	24	18.8%
Loss of Job/Income	192	7.0%	59	11.3%	10	7.8%
Eviction by primary tenant	144	5.2%	55	10.6%	13	10.2%
Asked to leave by landlord	171	6.2%	21	4.0%	5	3.9%
Domestic Violence (DV)	166	6.0%	17	3.3%	12	9.4%
Court Eviction by Landlord	145	5.3%	28	5.4%	7	5.5%
Mental Health	156	5.7%	34	6.5%	4	3.1%
Substance Abuse	114	4.1%	24	4.6%	6	4.7%

Table 10: Distribution of the top ten reasons cited for homelessness by heads of households in NY-508 by County. Excludes households who did not provide a response.



2022 Homelessness Summary Brief

NY-508: Erie, Niagara, Genesee, Orleans, Wyoming

Residence Type Prior to Homelessness

Residence Prior to Project Entry	Erie County Households		Niagara County Households		GOW County Households	
	#	%	#	#	%	#
Emergency shelter, hotel/motel paid w/ voucher, or RHY Host Home shelter	982	32.2%	122	17.0%	91	20.5%
Place not meant for habitation	468	15.4%	129	17.9%	89	20.1%
Staying or living in a family member's room, apartment, or house	464	15.2%	75	10.4%	60	13.5%
Staying or living in a friend's room, apartment, or house	319	10.5%	113	15.7%	61	13.8%
Rental by client, no ongoing housing subsidy	245	8.0%	50	7.0%	25	5.6%
Jail, prison, or juvenile detention facility	92	3.0%	52	7.2%	55	12.4%
Hotel or motel paid for without emergency shelter voucher	103	3.4%	45	6.3%	27	6.1%
Hospital or other residential non-psychiatric medical facility	102	3.3%	40	5.6%	18	8.1%
Substance abuse treatment facility or detox center	51	1.7%	21	2.9%	8	1.8%
Safe Haven	31	1.0%	24	3.3%	4	0.9%

Table 11: Distribution of the top ten locations clients were residing at before entering the homelessness system according to heads of households in NY-508 by County. Excludes households who did not provide a response.



2022 Homelessness Summary Brief

NY-508: Erie, Niagara, Genesee, Orleans, Wyoming

Zip Code of Last Permanent Address before Homelessness

Zip Code of Last Permanent Address	%	Zip Code of Last Permanent Address	%
14215	12.4%	14214	3.8%
14211	8.8%	14301	3.7%
14212	5.3%	14206	3.3%
14213	4.6%	14201	2.9%
14207	3.9%	14208	2.7%

Table 12: Distribution of the top ten zip codes clients were residing in before entering the homelessness system according to heads of households in NY-508. Excludes households who did not provide a response or provided an invalid zip code.

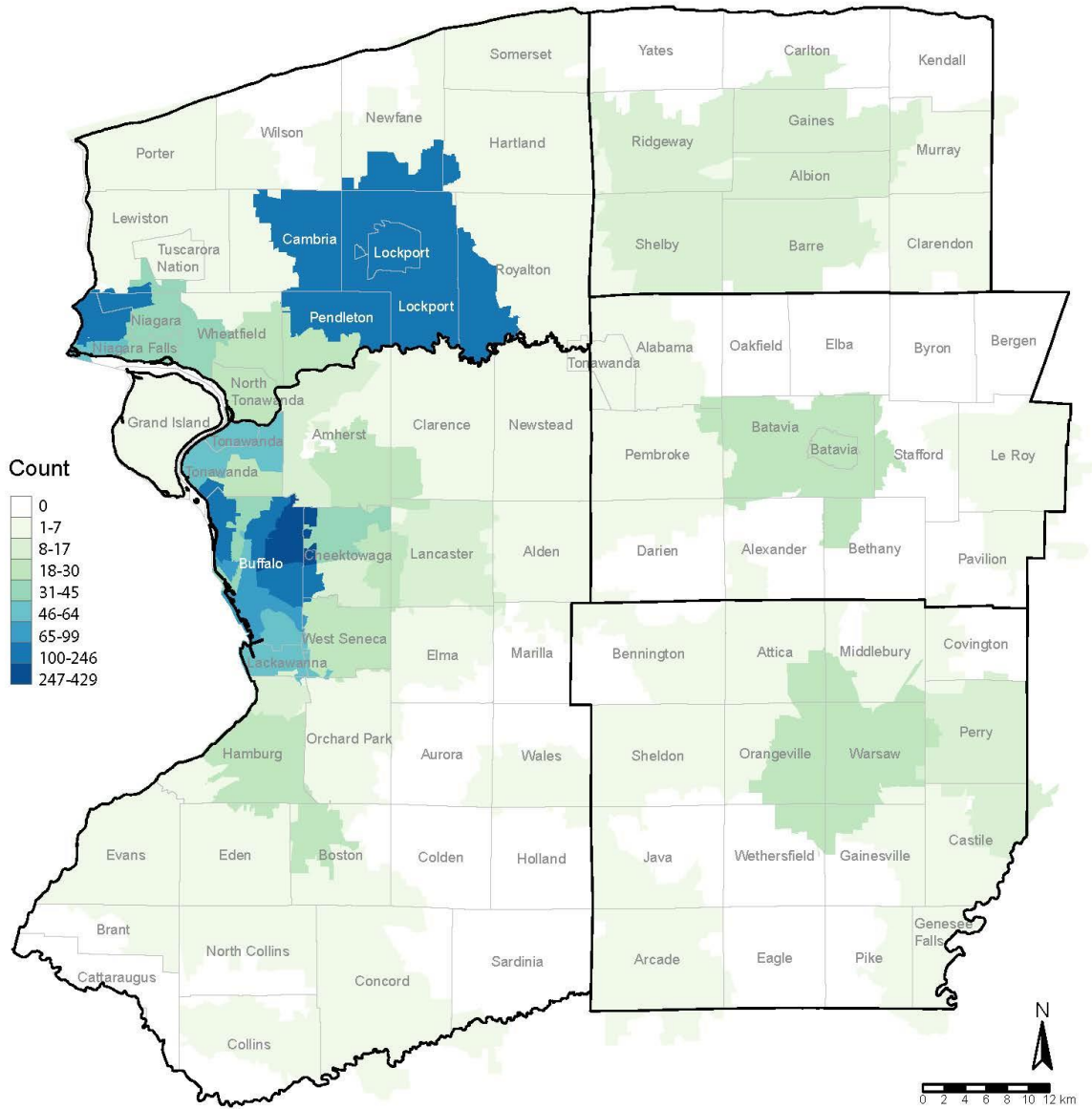


Figure 5: A map of Erie, Niagara, Genesee, Orleans, and Wyoming counties with zip code area color showing the count of clients who resided in that zip code before entering the homelessness system.

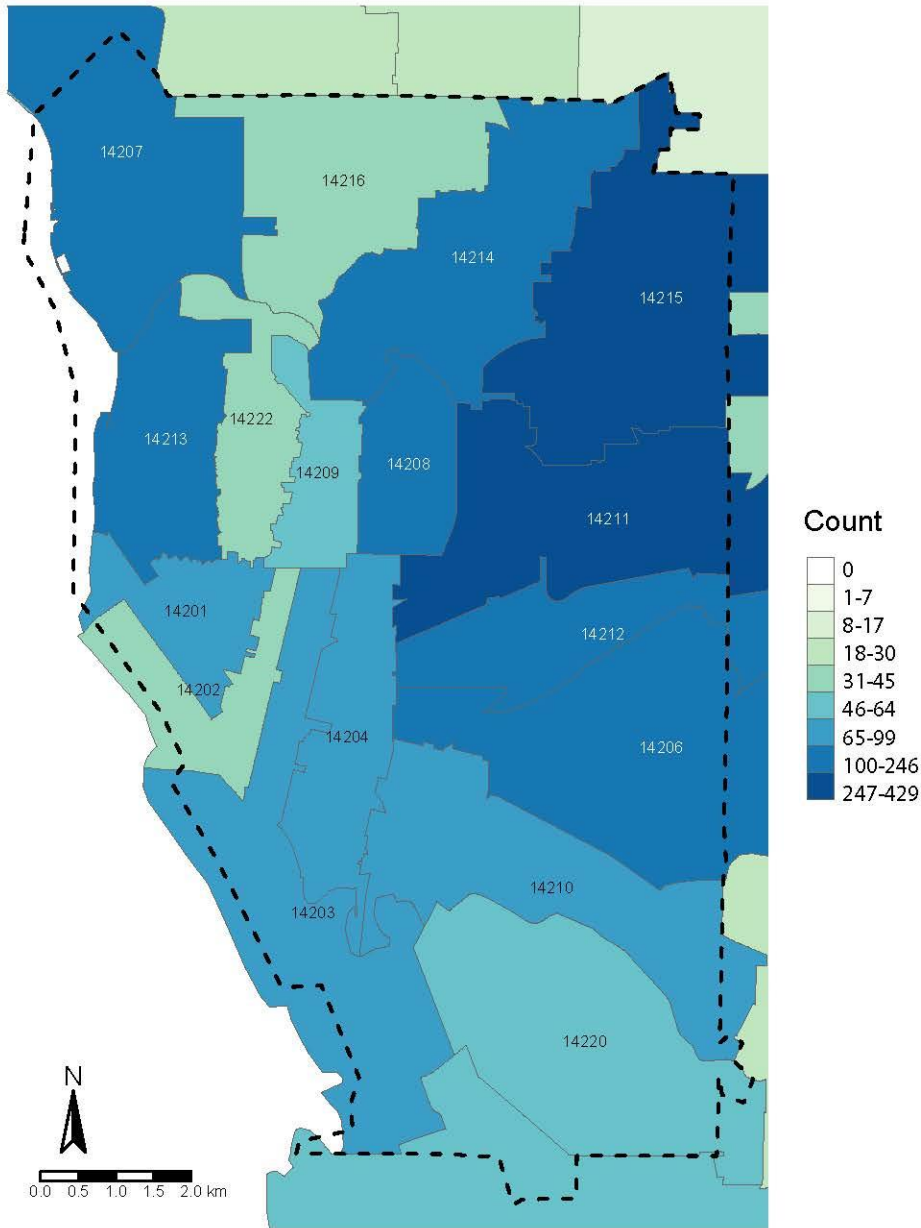


Figure 6: A map of the City of Buffalo with zip code area color showing the count of clients who resided in that zip code before entering the homelessness system.



2022 Homelessness Summary Brief

NY-508: Erie, Niagara, Genesee, Orleans, Wyoming

Exit Destination

Exit Destination	Erie County Households		Niagara County Households		GOW Counties Households	
	#	%	#	%	#	%
Permanent	848	36%	173	22%	64	32%
Temporary	916	39%	152	19%	17	8%
Institution	114	5%	55	7%	3	1%
Other/Unknown	490	21%	417	52%	118	58%

Table 13: Distribution of the housing types clients were residing at after exiting the homelessness system in NY-508 by County.

Exit Destination Type Specifics			
Permanent	Temporary	Institution	Other/Unknown
Owned by client (with or without subsidy)	Emergency shelter, hotel/motel paid with voucher or RHY Host Home shelter	Foster care home or foster care group home	Client doesn't know/Client prefers not to answer
Permanent housing (other than RRH) for formerly homeless persons	Host Home (non-crisis)	Hospital or other residential non-psychiatric medical facility	Data not collected
Rental by client (in public housing or with or without subsidy or voucher)	Hotel/motel without voucher	Jail, prison, or juvenile detention facility	Deceased
Staying or living with family or friends (permanent tenure)	Place not meant for habitation	Long-term care facility or nursing home	No exit interview completed



2022 Homelessness Summary Brief

NY-508: Erie, Niagara, Genesee, Orleans, Wyoming

	Safe Haven	Psychiatric hospital or other psychiatric facility	Other
	Staying or living with family or friends (temporary tenure)	Substance use treatment facility or detox center	Residential project or halfway house with no homeless criteria
	Transitional housing for homeless persons		

Table 14: Specific Exit Destinations by their Destination Type.

Special Populations

Some individuals experiencing homelessness are more likely to have more severe service needs. The groups of these individuals who meet certain criteria are referred to as “Special Populations.” In NY-508 there are four main Special Populations, which are homeless, survivors of domestic violence, veterans, and youth. Clients who meet the criteria for one or more of these special populations are prioritized for services within the CoC. Due to the extremely sensitive nature of information on clients who are survivors of domestic violence limited data is available for this special population.

Special Population Definitions

Population	Definition/Criteria
Chronically Homeless	An individual with a disability who has been homeless for at least 12 consecutive months or has been homeless on at least 4 separate occasions in the last 3 years and the combined time homeless equals at least 12 months.
Survivor of Domestic Violence	An individual who has previously or is currently experiencing domestic violence, sexual assault, dating violence or stalking.
Veteran	An individual who has ever been on active duty in the armed forces of the United States.
Youth	An individual between the ages of 12 and 24 alone or in a household with no members over age 24.

Table 15: Definitions of Special Populations seen in NY-508. Note that these definitions are summarized due to space limitations.

Special Populations and Homelessness

Special Population	Erie County Clients		Niagara County Clients		GOW Counties Clients	
	#	%	#	%	#	%
Chronically Homeless	550	9.4%	73	8.6%	19	3.3%
Survivor of Domestic Violence	586	13.4%	75	9.1%	46	9.6%
Veteran	215	3.7%	36	4.2%	60	10.3%
Youth	676	11.5%	97	11.4%	75	12.9%

Table 16: Distribution of Special Population clients in NY-508 by County.

Gender Among Special Populations

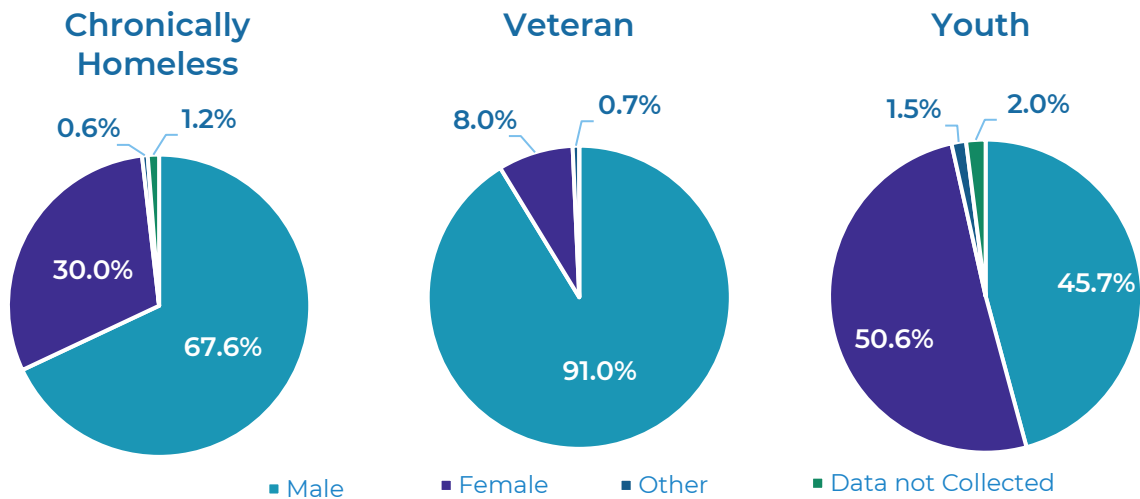


Figure 7: Gender distribution among Special Populations in NY-508.

Age Among Special Populations

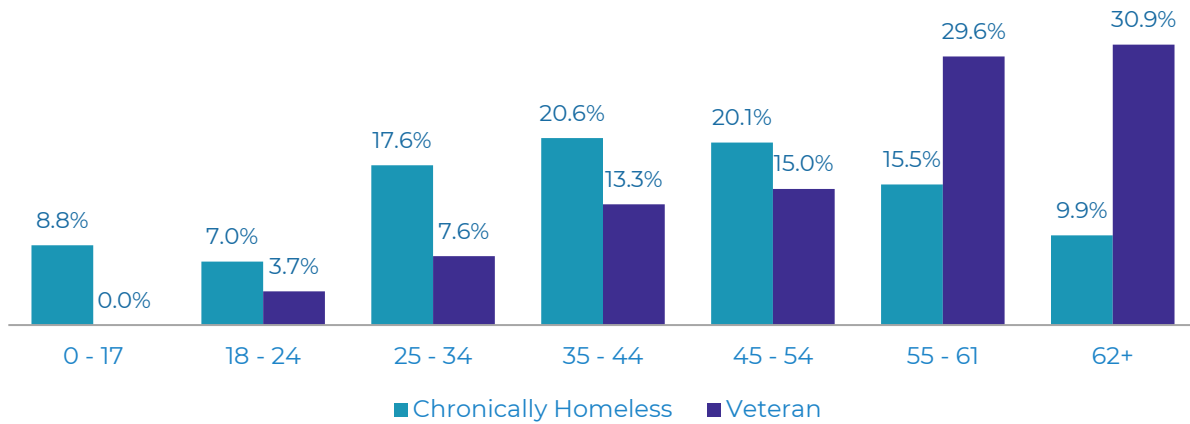


Figure 8: Age distribution among Special Populations in NY-508.

Disability Among Special Populations

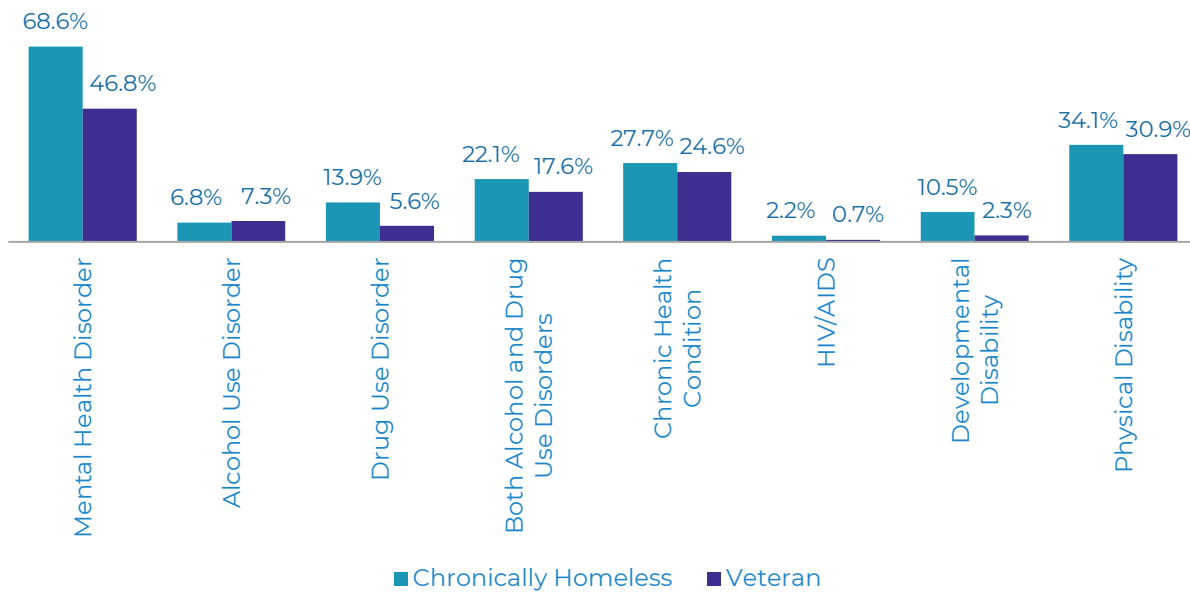


Figure 9: Disability distribution among Special Populations in NY-508.